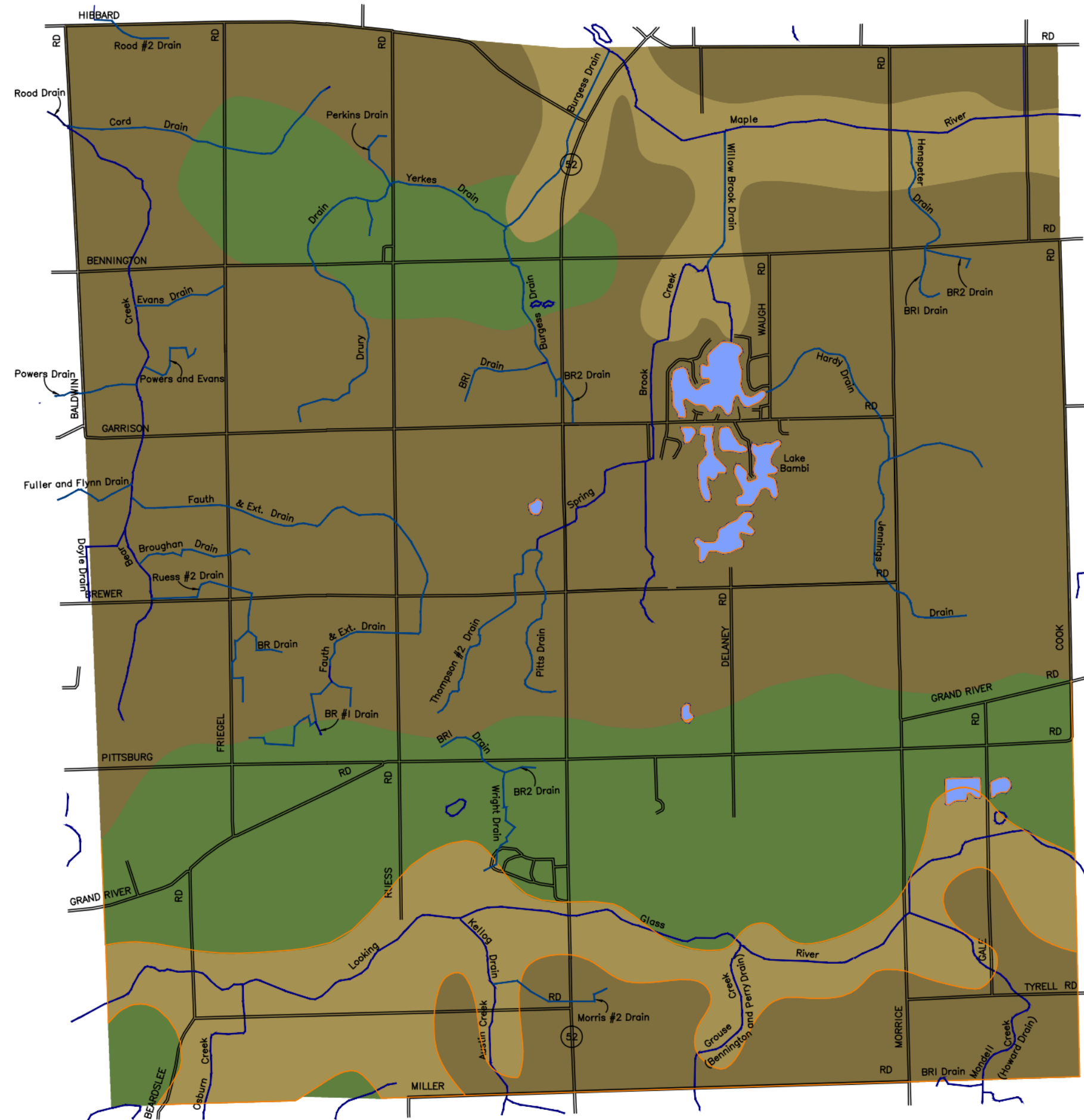






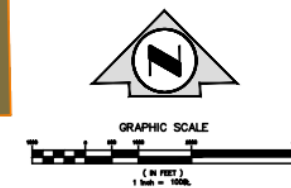
# BENNINGTON TOWNSHIP

## SOILS ASSOCIATION MAP

### MAP 5



- 
**MIAMI-CONOVER-BROOKSTON**
  - \* WELL-DRAINED TO POORLY DRAINED, NEARLY LEVEL TO STEEP, LOAMY SOILS ON TILL PLAINS AND MORAINES. (CONTAINS A MIX OF SOILS, SOME OF WHICH ARE SUITABLE FOR DEVELOPMENT.)
- 
**BOYER-WASEPI-SPINKS**
  - \* WELL-DRAINED AND SOMEWHAT POORLY DRAINED, NEARLY LEVEL TO STEEP, SANDY AND LOAMY SOILS ON OUTWASH PLAINS, TERRACES, AND MORAINES. (CONTAINS THE HIGHEST CONCENTRATION OF SOILS SUITABLE FOR DEVELOPMENT.)
- 
**CARLISLE-GILFORD-TAWAS**
  - \* VERY POORLY DRAINED AND POORLY DRAINED, NEARLY LEVEL, MUCKY AND LOAMY SOILS ON OUTWASH PLAINS AND IN GLACIAL DRAINAGEWAYS. (GENERALLY UNSUITABLE FOR DEVELOPMENT.)
- 
**OPEN WATER**





**ROWE INCORPORATED**

Corporate HQ 6211 Taylor 810-341-7500	MT. PLEASANT 127 S. Main 517-772-2138	LAPEER 462 W. Genesee 810-664-9411	FLINT 432 N. Saginaw 810-234-1056	GRAND RAPIDS 6207 Brewer 616-863-9300
---------------------------------------------	---------------------------------------------	------------------------------------------	-----------------------------------------	---------------------------------------------