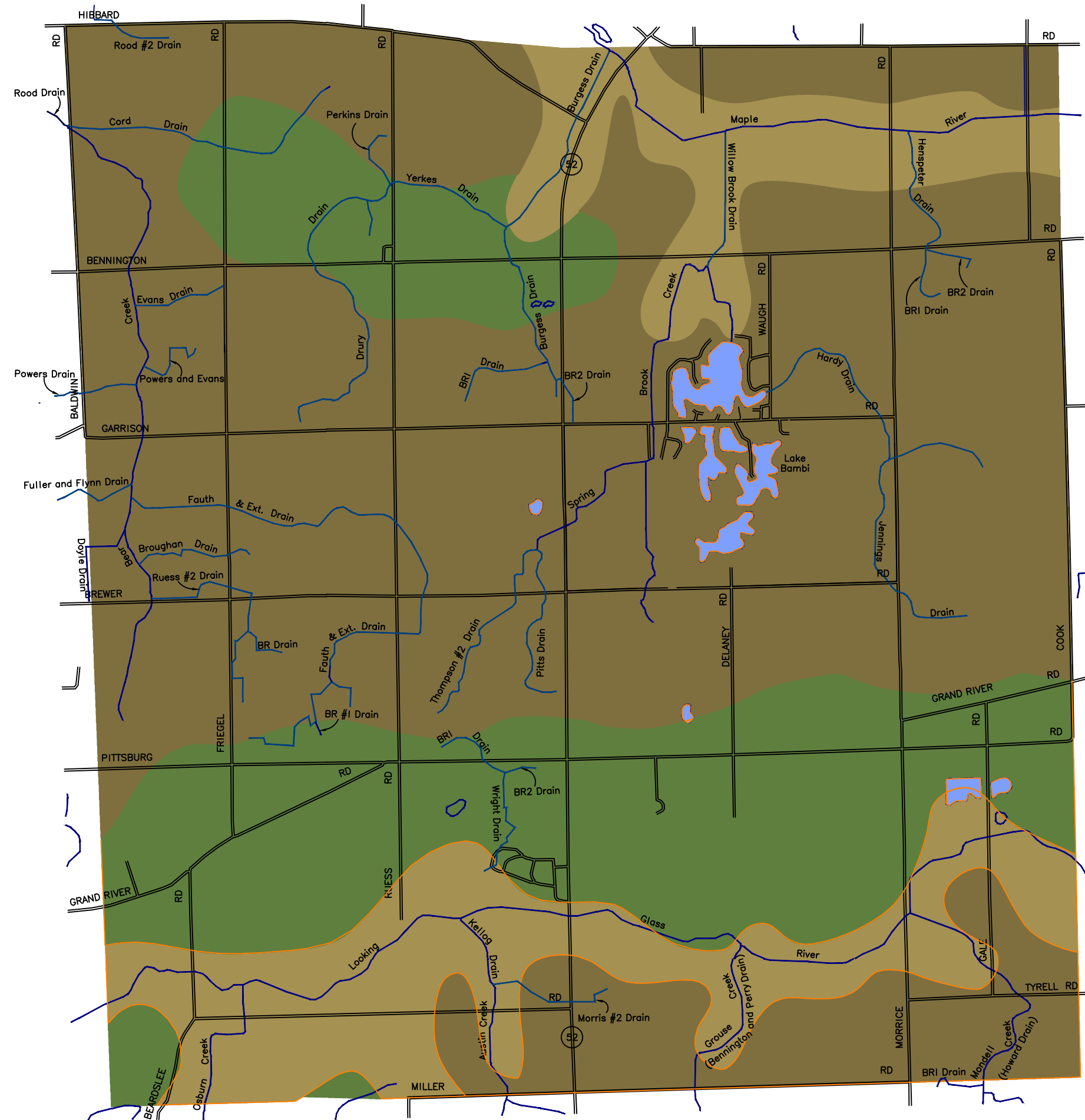






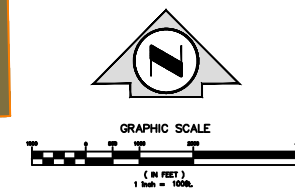
BENNINGTON TOWNSHIP


SOILS ASSOCIATION MAP

MAP 5



- 
MIAMI-CONOVER-BROOKSTON
 - * WELL-DRAINED TO POORLY DRAINED, NEARLY LEVEL TO STEEP, LOAMY SOILS ON TILL PLAINS AND MORAINES. (CONTAINS A MIX OF SOILS, SOME OF WHICH ARE SUITABLE FOR DEVELOPMENT.)
- 
BOYER-WASEPI-SPINKS
 - * WELL-DRAINED AND SOMEWHAT POORLY DRAINED, NEARLY LEVEL TO STEEP, SANDY AND LOAMY SOILS ON OUTWASH PLAINS, TERRACES, AND MORAINES. (CONTAINS THE HIGHEST CONCENTRATION OF SOILS SUITABLE FOR DEVELOPMENT.)
- 
CARLISLE-GILFORD-TAWAS
 - * VERY POORLY DRAINED AND POORLY DRAINED, NEARLY LEVEL, MUCKY AND LOAMY SOILS ON OUTWASH PLAINS AND IN GLACIAL DRAINAGEWAYS. (GENERALLY UNSUITABLE FOR DEVELOPMENT.)
- 
OPEN WATER





ROWE INCORPORATED

Corporate HQ 6211 Taylor 810-341-7500	MT. PLEASANT 127 S. Main 517-772-2138	LAPEER 462 W. Genesee 810-664-9411	FLINT 432 N. Saginaw 810-234-1056	GRAND RAPIDS 6207 Brewer 616-863-9300
---	---	--	---	---